

A world map with a blue wireframe network overlay, representing global logistics routes. The map is centered on the Atlantic Ocean, with North and South America on the left and Europe, Africa, and Asia on the right. Two white circles are overlaid on the map: one around North America and another around Europe and Africa. The company logo and text are centered over the map.

Multimodal Transports & Interlogistics

B **I** **S** S.p.A.

A red arrow pointing to the right, with the number '67' inside it. The arrow is positioned behind the 'S' in the logo.

Baggio **I**nternational **S**hipping

Multimodal Transports & Interlogistics



Baggio International Shipping

Let's go Worldwide!

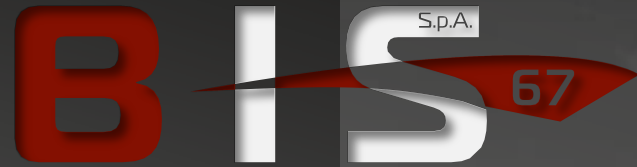
We are an International Shipping Company
specialised in moving General and Project cargo

www.bis67.com

SINCE 1967

Baggio International Shipping 67 S.p.A.

Multimodal Transports & Interlogistics



Baggio International Shipping



TRIPLE R TRANSPORTATION
and
THE PASHA GROUP
OUR UNITED STATES PARTNER

56

YEARS OF EXPERIENCE IN THE SECTOR



SPECIALISED
QUALIFIED TEAM



COMPLETE, TURNKEY
SERVICE



CUSTOMISATION AND
FAST DELIVERY



EFFICIENT, SAFE
& GREEN TRANSPORT





We analyse, plan, organize and manage the international forwarding and transport of general / project cargo. We move standard, oversized, and overweight freight. We move it to critical and remote sites. We guarantee the maximum efficiency quality, fast delivery by having old the time our qualified staff at loading and offloading place.

Thanks to our experience and agent network spread worldwide we deal with large companies, private and public, supporting their development of particularly complex and challenging projects in the field of energy, industrial, oil & gas plants, construction, etc.

Francesco Baggio has been operating in the logistics and transports sectors since he first founded **FBaggio Trasporti Internazionali** in 1967.

During his long business career, he has worked in the Middle East, Africa, Eastern Europe, North and South America, Far East, operating in a number of fields, from the transport of materials and plant systems for the oil & gas, energy and industrial sectors to the air, maritime and urban mobility sectors, in particular for the transport of railway trains and railway carriages for leading construction companies worldwide.

Bis 67 was established with the aim of offering an innovative, fluid, modern and green service.



Multimodal Transports & Interlogistics



Baggio International Shipping

OUR AREAS OF SPECIALIZATION

We specialize in the transportation of Project Cargo and Railway Cars worldwide, equipment and installations for large-scale logistics projects.



www.bis67.com



Transport of railway carriages

We are specialized in the transport of trains and metro trains for projects in the sectors of urban and extra urban rail mobility, in Italy, Europe and Worldwide.

Punctuality is all about efficient time management.

We are specialized in the transport of trains and metro trains for projects in the sectors of urban and extra urban rail mobility, we moved railcars in Italy, Europe and abroad.

Moving Trains and metros including engines and any type of railcars is the service we take the greatest pride in.

We have a vast experience behind us in this specific sector, and a deep knowledge of all the dynamics involved including the necessary resources to move and to ship in a safety manner this particular freight category.

Over the years, we have worked for leading train and locomotive builders worldwide, contributing to a number of important projects, including the railway systems in Casablanca, Birmingham, Manchester, Oslo, Taipei, Honolulu, Miami, Lima, Copenhagen and Milan.

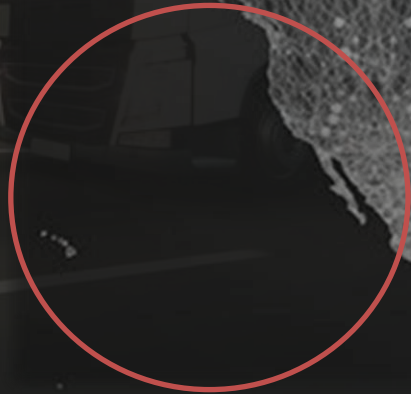
Our expert, qualified staff, together with a careful analysis and planning of the most suitable route, allows us to guarantee our customers the necessary support, providing a reliable, safe service and keeping to the timescale established.





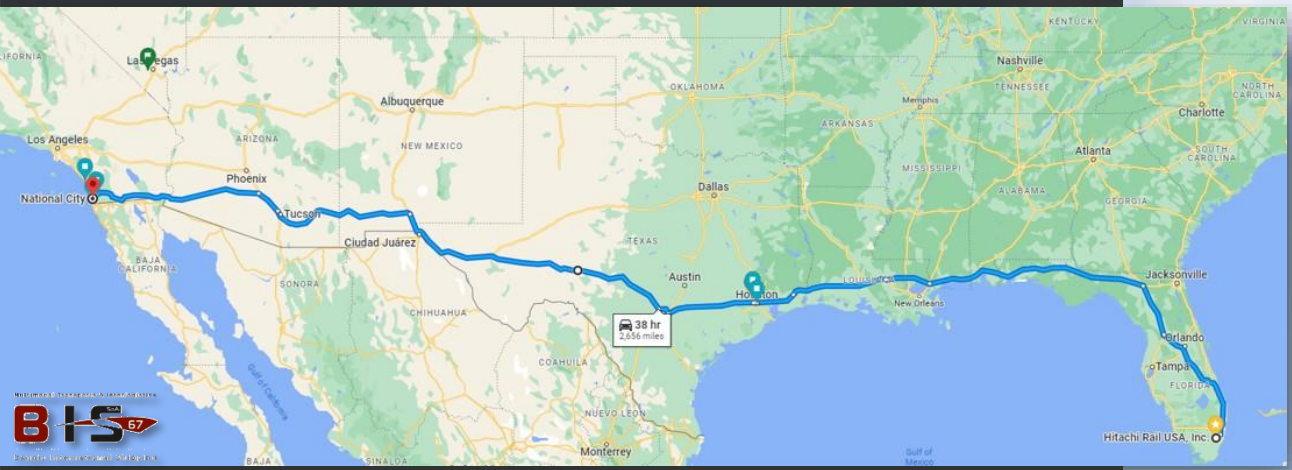
Road and Maritime Transports

RAIL PROJECT HONOLULU - USA



Transportation of a complete Railway Train, carried out between March and April 2023 from the site of Miami to the Port of San Diego by road; from the Port of San Diego to Honolulu by Ship; from the Port of Honolulu to the Hart Facility in Honolulu again by Road.

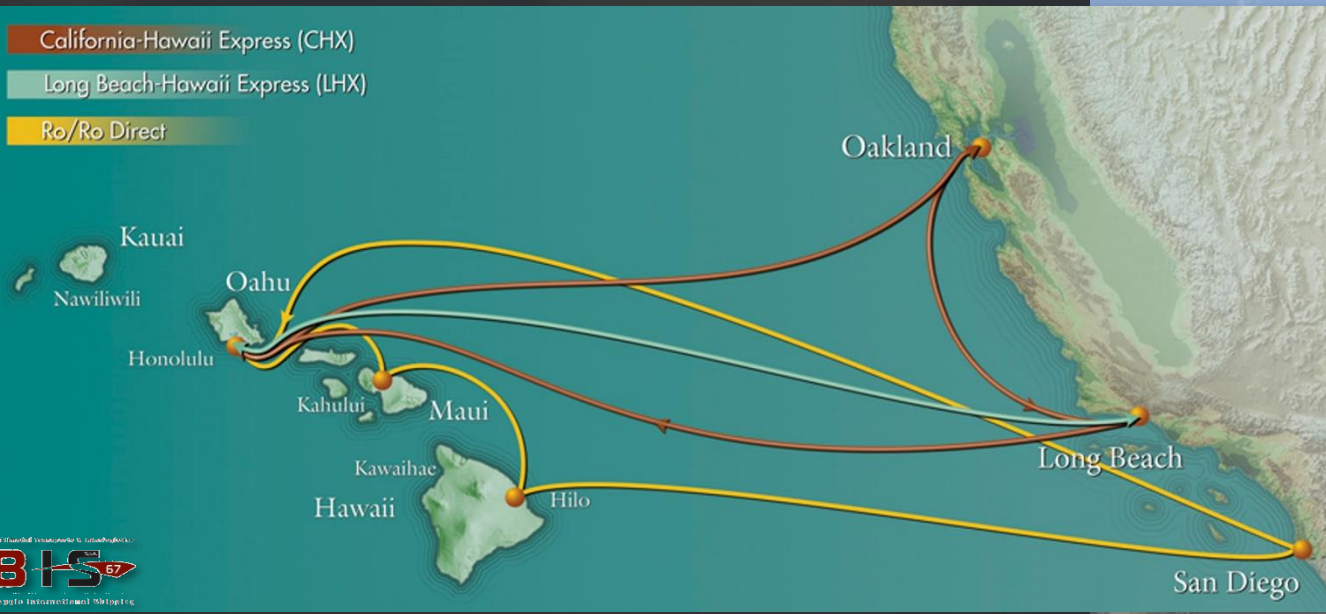


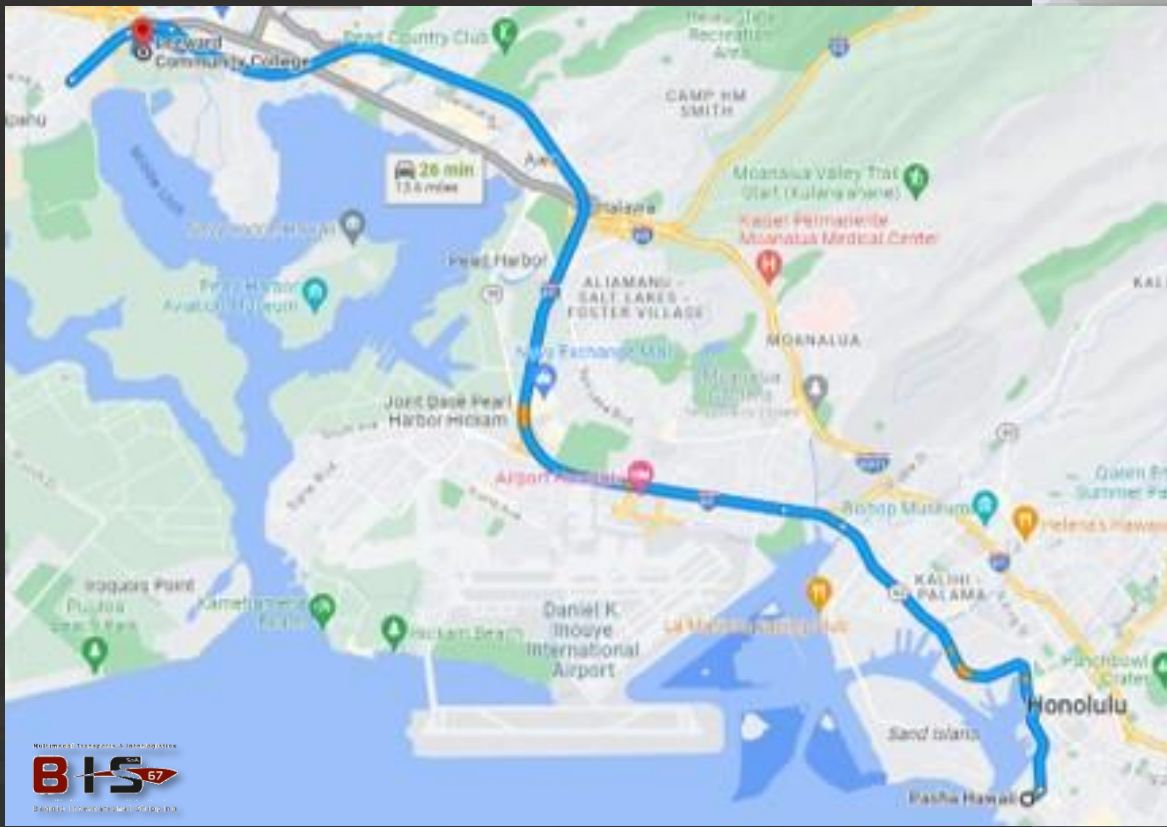


California-Hawaii Express (CHX)

Long Beach-Hawaii Express (LHX)

Ro/Ro Direct







Transport of plant machinery

We are a reliable partner for complex logistics projects that require the use of specific skills, staff and means of transport.

We take care of every load as if it were our own.

Our widespread world network, and our leading-edge resources allow us to schedule, manage and monitor the transport of machinery, equipment, large supplies and oversized freight for the construction of plants, installations of public and private structures in the Oil & Gas, Renewable Energies, Industrial, Civil and Port Infrastructures and Urban Mobility sectors.

We are able to handle all aspects of the management of delicate, complex shipments that require a combination of different means and modes of transport. We carry out preliminary studies and inspections to ensure projects are feasible and identify any risk factors.

We carefully plan the best route to take, taking account of the customer's needs with the aim of optimising delivery times and costs. We guarantee a highly punctual, reliable service, even for complex projects and in critical or difficult-to-reach destinations.





Multimodal Transports & Interlogistics



Baggio **I**nternational **S**hipping

Multimodal Transports & Interlogistics



Baggio **I**nternational **S**hipping

OUR SERVICES

We offer our customers solutions tailored to their needs,
from Road and Rail Transport to Air and Sea Transport.



www.bis67.com



Railway transport

Rail transport is more reliable, quicker and cost-effective than road transport for medium and long distances.

Any distance can be covered, provided the route is planned carefully.

We take care of the rail transport of special loads and freight of different kinds, both in Italy and throughout Europe. We plan and organise the journey, identifying the best solution according to the customer's requests. We combine rail and road transport, to take goods from the arrival station to their final destination.

Thanks to the know-how acquired over the years and to our skilled, qualified staff, we are able to guarantee the achievement of the objectives set for the customer. In addition, our advanced technology allows us to constantly monitor the progress of the journey, ensuring punctual deliveries and a completely reliable service.





Maritime transport

Maritime transport is the least expensive, most widely used mode for shipping heavy loads and large amounts of freight internationally.

Your freight is safe at sea with us.

Cargo ships, container ships and RO/RO ships. Maritime transport can be used to cover long distances, with reduced costs. We take care of transport by sea of any type of freight, identifying the best route to take and monitoring the shipment in real time, to ensure that the delivery times established in the contract with the customer are met.

Thanks to our network of agents, we are able to manage and move loads departing from and arriving in the relevant ports, transporting them to their final destination by road and rail. We also offer qualified, expert staff for shipbroking and offshore services.





Road transport

Road transport is a flexible, cost-effective solution, the most widely used for national and international shipments on land.

However long the road is, we always reach our destination.

Road transport is a versatile, and above all direct, solution, allowing goods to travel straight from departure to arrival without being moved again. Our significant experience in the sector, coupled with our advanced technological support, allows us to identify and plan the best route to take, constantly monitoring the progress of the journey through to its successful completion.

We are able to transport any kind of freight, including loads of non-standard size and/or weight, for express shipments, groupage and FTL. We provide customers with advantageous solutions tailored to their needs, guaranteeing punctual deliveries.





Air transport

Air transport is the fastest, most reliable option for urgent international shipments, or for fragile or particularly valuable goods, even large items.

Speed is the end result of perfect organisation.

Compared to land or sea, the advantage of air transport is that it can cover long distances in a short time. Thanks to the experience acquired over the years and our extensive network of qualified partners, we are able to offer customers a safe service at a competitive price.

Using multimodal transport solutions, we are able to organise journeys arriving in and departing from established airports, ensuring they reach their final destination on time and providing a quality service. We monitor the progress of the journey in real time, so we can provide constant updates to the customer and guarantee a safe, reliable service.

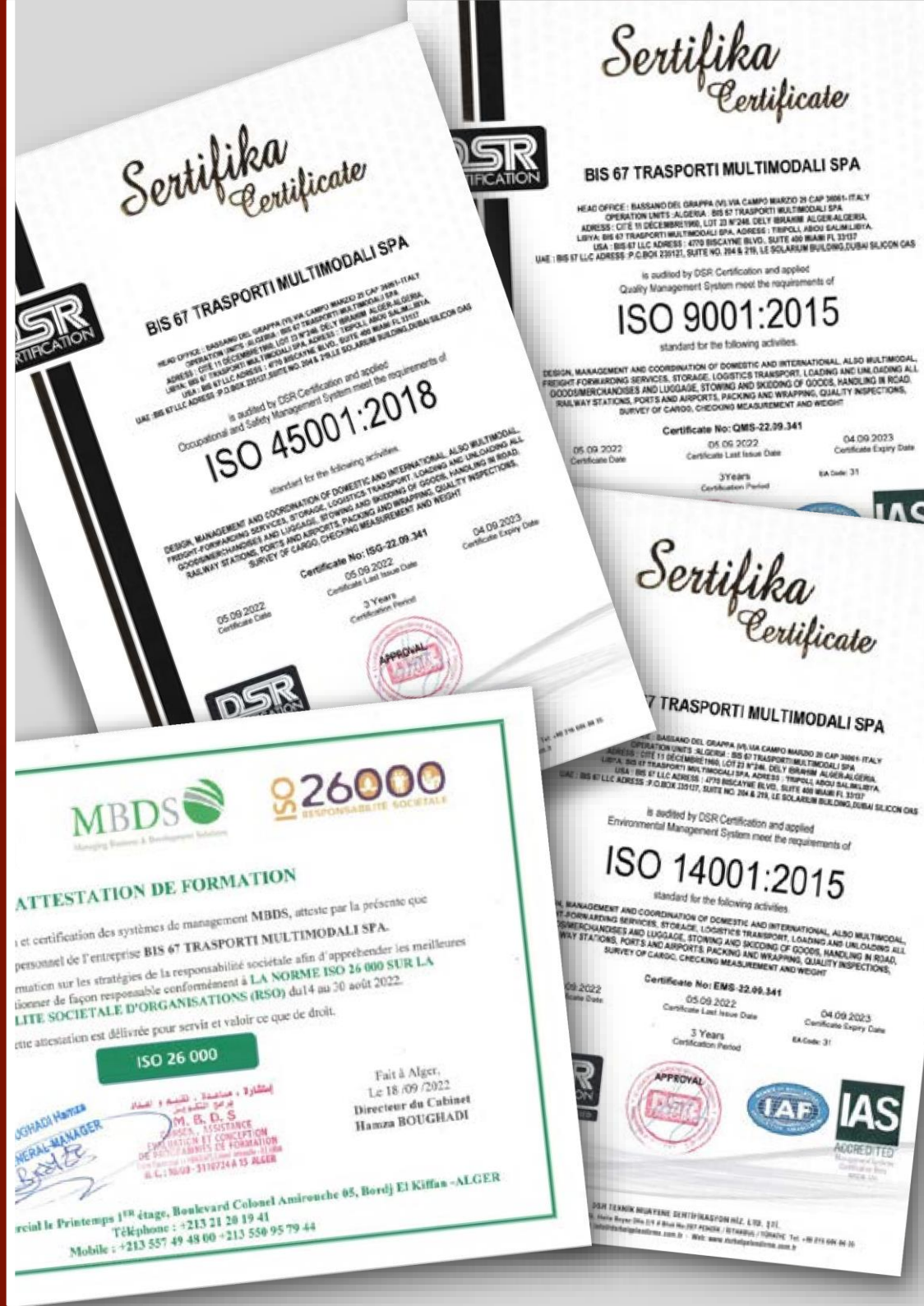


Multimodal Transports & Interlogistics



Baggio International Shipping

CERTIFICATIONS



BRANCHES

We are present in Italy, the USA, North Africa and the Middle East, and we have a network of agents spread worldwide.

We are able to deal with any request.



LEGAL OFFICE

BASSANO DEL GRAPPA

Via Campo Marzio 29, 36061 - Bassano del Grappa (Italy)

☎ +39 0424 226712 ✉ info@bis67.com

ITALIAN OPERATIONAL BRANCHES

MARGHERA - VENEZIA

Via A. Volta 2, 30175 Marghera - Venezia (Italy)

☎ + 39 041.9347715

Pietro Lino: ☎ +39 375.5251045 ✉ pietro.lino@bis67.com

REGGIO CALABRIA

Via Nilde Iotti 51, 89129 Reggio Calabria

☎ + 39 0965.3745202

Elia Caiazzo: ☎ +39 375.5251042 ✉ elia.caiazzo@bis67.com

FOREIGN OPERATIONAL BRANCHES

BIS 67 MULTIMODAL TRANSPORTS & INTERLOGISTICS LLC

UNITED STATES - MIAMI (FLORIDA) -

HOUSTON (TEXAS)

Marco Cucculelli: ☎ +1-619-6272455 ✉ marco.cucculelli@bis67.com

BIS 67 BY MEDITERRANEAN FREIGHT BROKER LLC

UAE - DUBAI

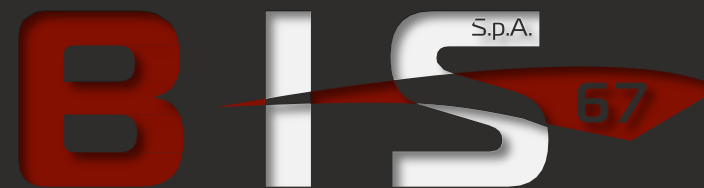
Hashem Gazal: ☎ +971-52-1322226 ✉ hashem.gazal@bis67.com

MEDITERRANEAN LOGISTICS COMPANY

ALGERIA - ALGERI - SKIKDA

Mario Serpico: ☎ +213-558-753710 ✉ mario.serpico@bis67.com

Multimodal Transports & Interlogistics



Baggio **I**nternational **S**hipping

BIS 67 TRASPORTI MULTIMODALI SPA

Via Campo Marzio, 29 - 36061 Bassano del Grappa (VI)

☎ +39 0424 226712 ✉ info@bis67.com www.bis67.com